

# Euclid 2014

A stylized orange graphic element consisting of a thick, curved line that spirals inward, resembling a galaxy or a stylized letter 'e'.

Lyon - Villeurbanne  
4 et 5 décembre 2014

A nighttime photograph of the city of Lyon, France, showing illuminated buildings and a bridge over a river. The scene is lit with various colors, including purple, blue, and green, with several bright spotlights or laser beams directed upwards from the city.

Maurice Poncet  
SDC-FR - Lead

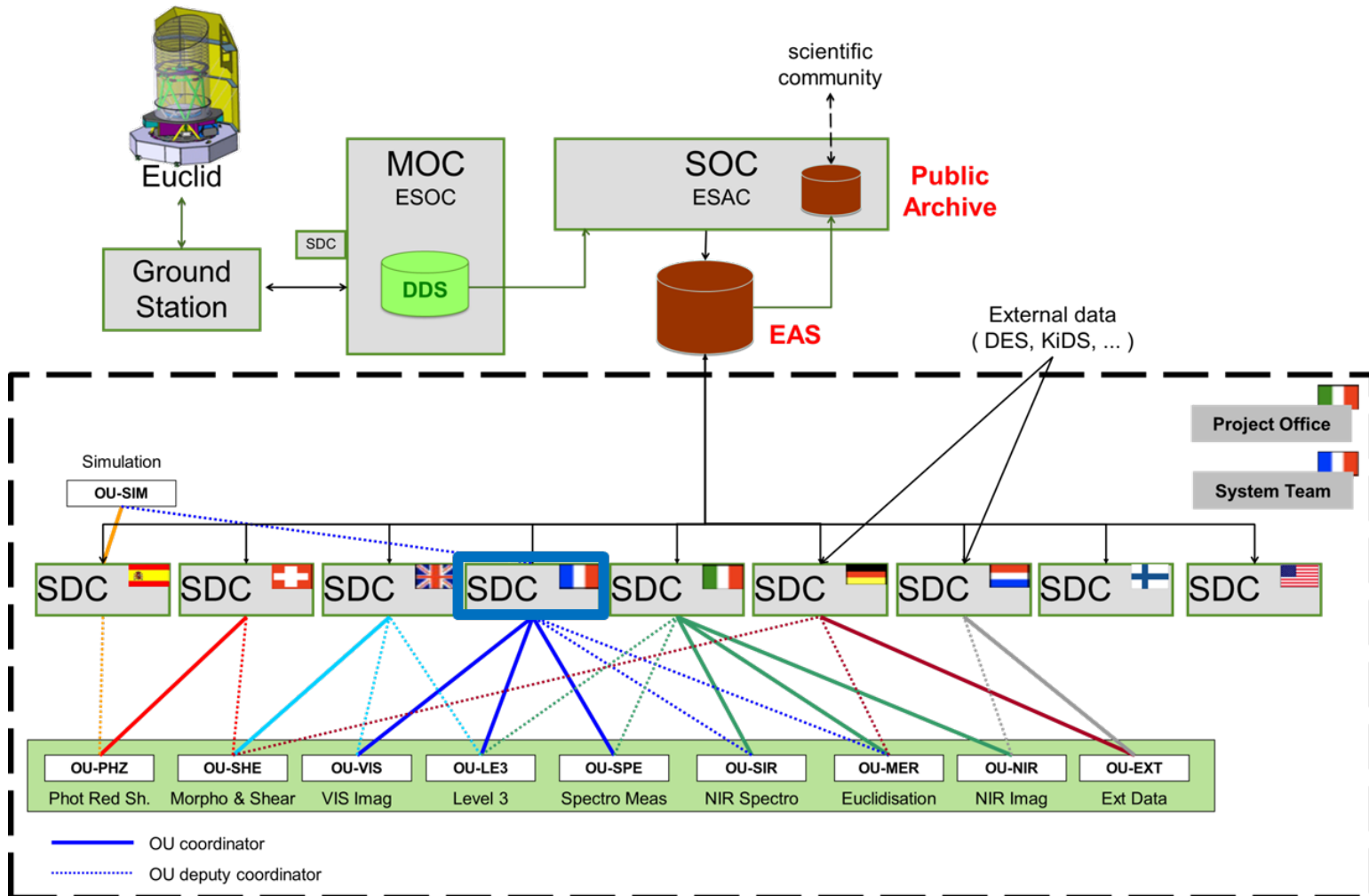
- SDC-FR Overview & Management
  - M. Poncet (SDC-FR Lead) – 10 mn
- SDC-FR Development plan - 10 mn
  - J.J. Metge (SDC-FR Technical Coordinator) – 10 mn
- SDC-FR Production Resources
  - K. Ganga (SDC-FR Scientific Coordinator) – 10 mn
- CC-IN2P3 presentation
  - P.E. Macchi (CC-IN2P3 Lead) – 10 mn
- Q & A
  - 5 mn

# **SDC-FR**

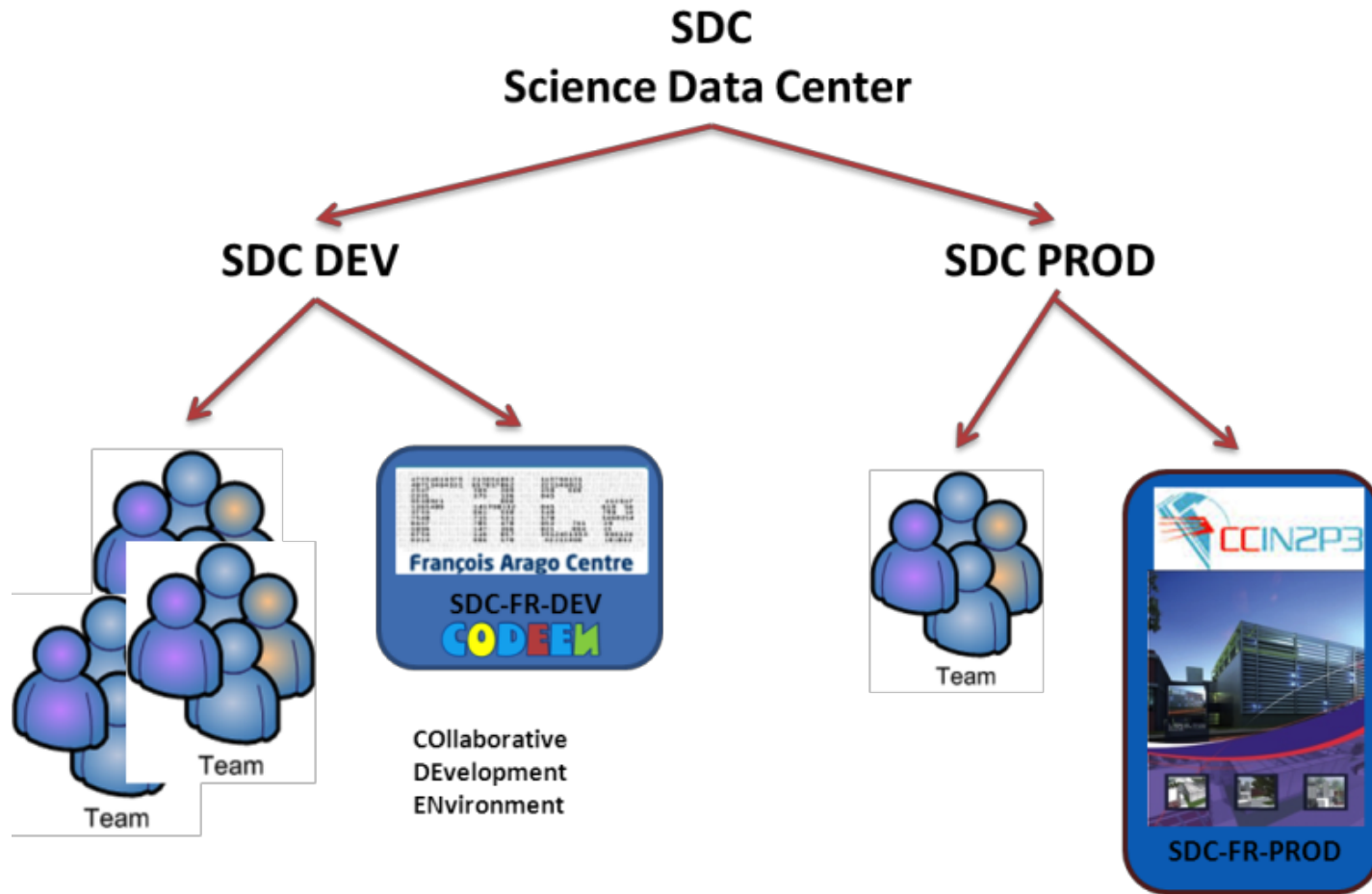
# **Overview & Management**

Maurice Poncet  
SDC-FR - Lead

# SDC-FR in the SGS



# SDC-FR Perimeter

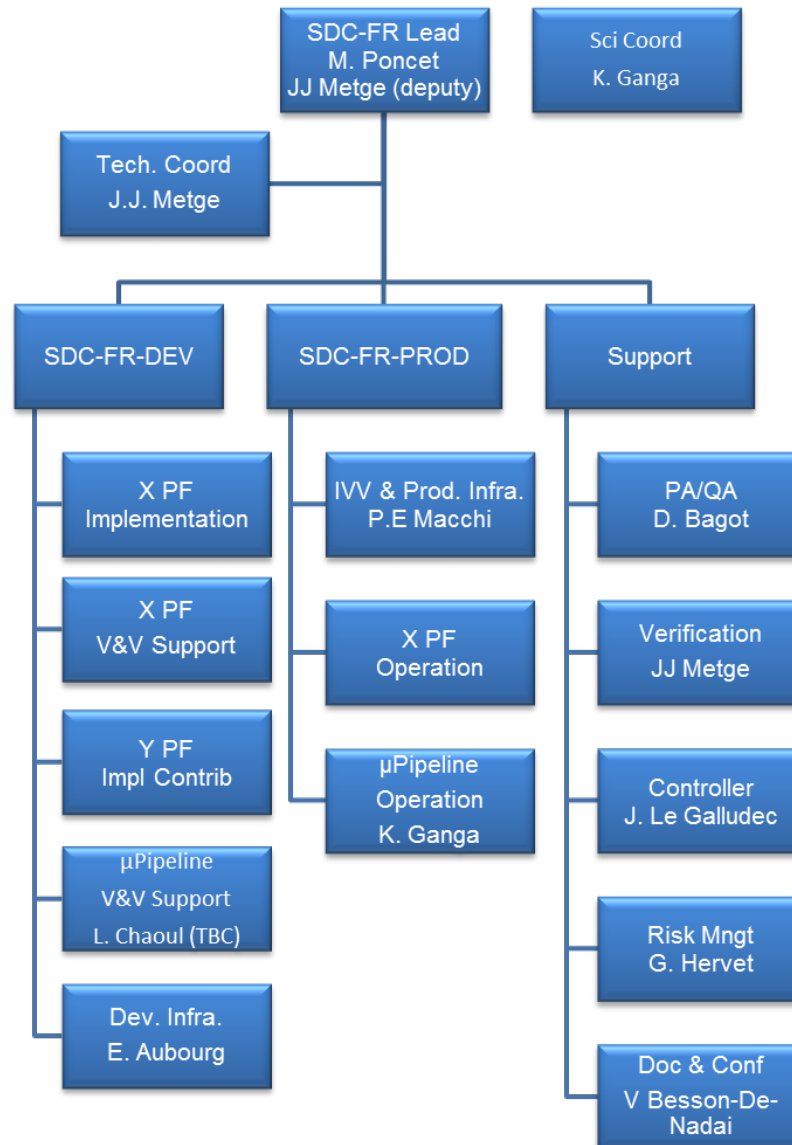


# SDC-FR members



Institute	Laboratories	Title	Location
CNES	-	Centre National d'Etudes Spatiales	Toulouse
CEA	Irfu	Institut de recherche sur les lois fondamentales de l'Univers	Paris
IN2P3	APC	AstroParticule et Cosmologie	Paris
	CC-IN2P3	Centre de Calcul de Institut national de physique nucléaire et de physique des particules	Lyon
	CPPM IPNL	Centre de physique des particules de Marseille l'Institut de Physique Nucléaire de Lyon	Marseille Lyon Marseille
INSU	IAP IAS IRAP	Institut d'Astrophysique de Paris l'Institut d'Astrophysique Spatiale l'Institut de Recherche en Astrophysique et Planétologie	Paris Orsay Toulouse
	Lagrange LAM	- Laboratoire d'Astrophysique de Marseille	Nice Marseille

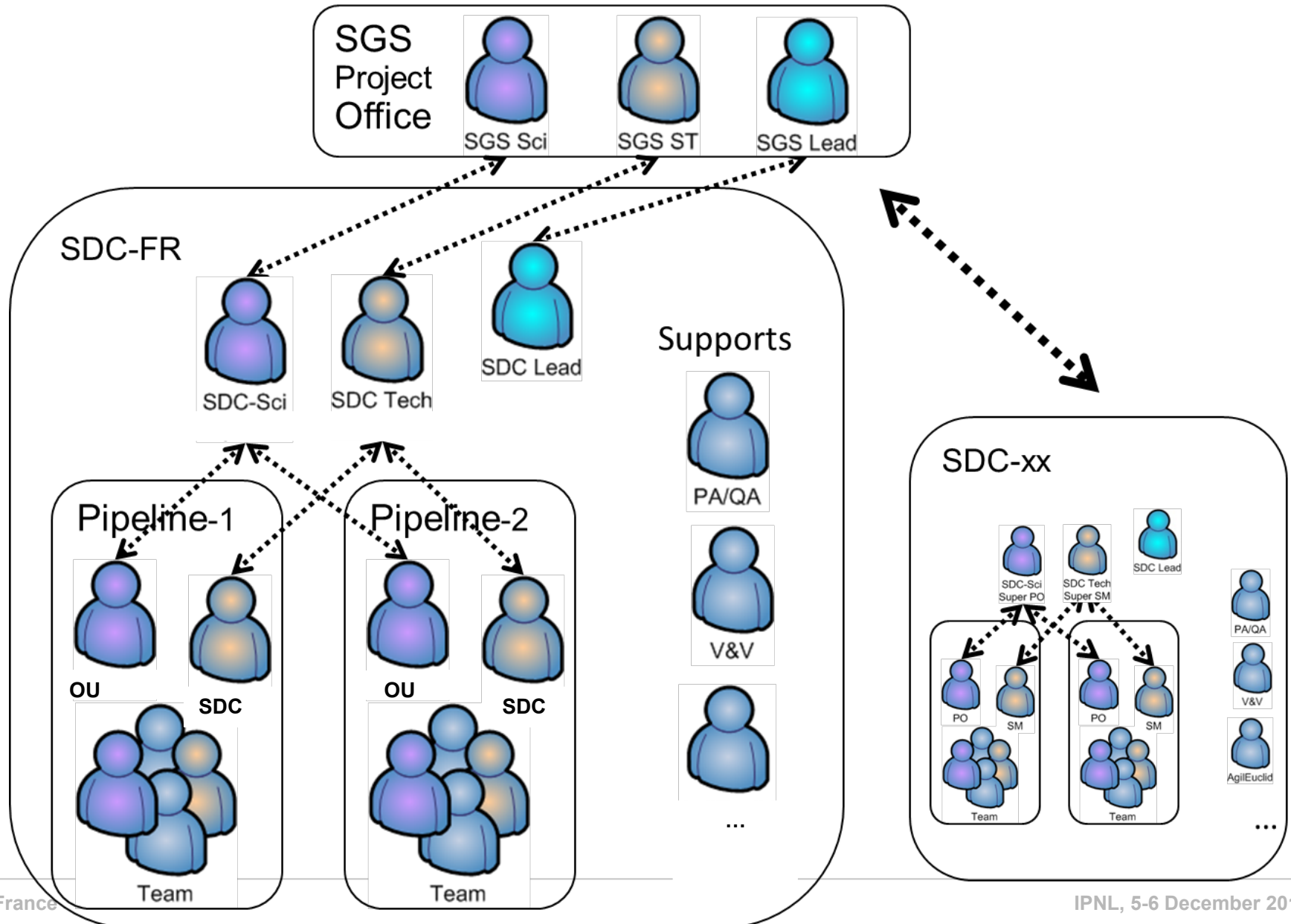
# SDC-FR Organization



- SDC-FR Leader
  - ◆ Responsible for SDC-FR consistency
  - ◆ Responsible for HR, budget & planning management
  - ◆ Responsible for SDC MDP (Management plan)
  - ◆ Ensures PO directives application
  - ◆ Project Office interlocutor, member of Organization Group, ST
  
- SDC-FR Technical Coordinator
  - ◆ Responsible for technical consistency and technical value of SDC-FR activities and products, development plan
  - ◆ Ensures ST directives application
  - ◆ Other SDCs dev teams interlocutor
  - ◆ System Team interlocutor
  
- SDC-FR Scientific Coordinator
  - ◆ Responsible for scientific consistency and scientific value of SDC-FR activities and products
  - ◆ Ensures scientific directives application
  - ◆ SGS scientist & OUs interlocutor



# SDC-FR PF Development



# SDC-FR and PF development



Processing Function	Lead SDC-DEV	Contributing SDC-DEV(s)
LE1	SOC	<b>SDC-FR</b>
VIS	<b>SDC-FR</b>	UK labs
NIR	SDC-IT	SDC-NL, SDC-US
SIR	SDC-IT	<b>SDC-FR</b> , SDC-US
EXT	SDC-DE, SDC-NL, <b>SDC-FR</b>	-
SIM	SDC-ES	<b>SDC-FR</b>
MER	SDC-IT	<b>SDC-FR</b> , SDC-DE
SPE	<b>SDC-FR</b>	SDC-IT
SHE	SDC-UK	SDC-CH, SDC-DE
PHZ	SDC-CH	SDC-DE, SDC-ES
LE3	<b>SDC-FR</b>	SDC-IT, SDC-UK

# SDC-FR PF responsibilities



PF	Lead	Contrib	Dev WP	V&V WP	Ops WP
VIS LE1, QLA	<b>IAP</b>		O. Herent	SOC	SOC
VIS	<b>IAP</b>	IAS, UK labs	S. Techene	C. Grenet	N/A
SPE	<b>LAM</b>	IPNL, SDC-IT	P.Y. Chabaud	T. Fenouillet	N/A
LE3	<b>Irfu</b>	CPPM, IRAP, LAM, Lagrange, SDC-IT, SDC-UK	S. Pires	R. Gastaud	N/A
SIM	SDC-ES	<b>CPPM</b> , Irfu, IPNL, IAP, LAM, Lagrange	S. Kermiche	S. Kermiche	S. Kermiche
EXT	DE/NL	<b>APC</b>	M. Detournay	M. Detournay	M. Detournay
MER	DE/IT	<b>IAS</b> , APC, IRAP	L. Vibert	L. Vibert	N/A
SIR	SDC-IT	<b>LAM</b> , IPNL, IRAP	C. Surace	SDC-IT	N/A
μPipeline	?	All	N/A	L. Chaoul	K. Ganga

- SDC-FR DEV staffing
- Integrated OU/SDC teams setup
- CNES/IN2P3 convention covering B2 to E1 phases for CC-IN2P3 production infra
- Pre-PDR activities (PF design, prototypes, ...)

Thank you for your attention